

Circus Klezmer technical requirements

THESE TECHNICAL REQUIREMENTS ARE A GUIDELINE ONLY. DETAILS ARE TO BE WORKED OUT ACCORDING TO THE CHARACTERISTICS OF THE PERFORMANCE SPACE

- **Set-up time**

Lights: One day, the day before the show.

Sound: In the morning, the day of the show.

- **Take-down time**

3 hours

- **Performance area**

Total performance area **minimum**: 8m. Wide X 8m deep X 6m. High

Diameter of central ring: 6 m.

- **Lighting**

To be determined according to the specifics of the performance space. It would be very useful for us if we could receive a detailed plan of the performance space as well as a list of the available lighting equipment.

- **Sound**

Suitable P.A. for the capacity of the performance and audience areas.

Sound check 6 hours minimum before the show.

- **Control (minimum requirements)**

1 sound desk with 8 inputs / 4 subgroups / 4 auxiliary

1EQ stereo

1CD player

3 compression channels

2 Multieffects Yamaha spx 1000

- **Monitors**

3 monitors with 3 different sends

1 EQ stereo

1EQ mono

- **Microphones**

Darbuka + flute 1 Shure SM 57

Snare AKG SE391K

Bass AKG D112

Accordion (melody) Wireless Audio-Tecnica UHF with Audio-Tecnica ATM35

Accordion (bass) Wireless Audio-Tecnica UHF with Audio-Tecnica ATM35

Clarinet Wireless Audio-Tecnica UHF with Audio-Tecnica ATM35

Violin Wireless Audio-Tecnica UHF with Audio-Tecnica ATM35

- **Installation requirements for aerial circus apparatus ie: 'Tissus' (cloth), trapeze and vertical rope.**

3 hang points in the ceiling with a minimum resistance of 300 kg., minimum height 6 meters.

In situations where access to these is difficult (in tents for example) then a suitable means of access must be provided such as a Geni or elevating platform of appropriate extension.

- **Staff**

The theatre will provide the company with:

-Setting Up: a sound and lighting technician and an assistant to help set up.

- **Additional requirements**

A bale of straw

Parking space for two vans

Dressing rooms for 9 people, with tables, chairs, ironing board, shower and w.c.

Mineral water for 10 people

3 liters of mineral water for the show, or a source of drinking water

In case of catering, we have special food needs: 2 vegetarians who don't eat meat + 1 vegetarian who don't eat meat or fish.

- **Characteristics of the show**

Suitable for all ages

Duration: 75 minutes

Language: none

NB: This show adapts to any space where direct interaction with the audience is possible.

- **Technicians to Contact.**

LIGHTS: Carlos Aparicio

E-mail: charlysoni@yahoo.es

Tel.: + 34 628 921 855

SOUND: Ángel Estévez

sonologo@gmail.com

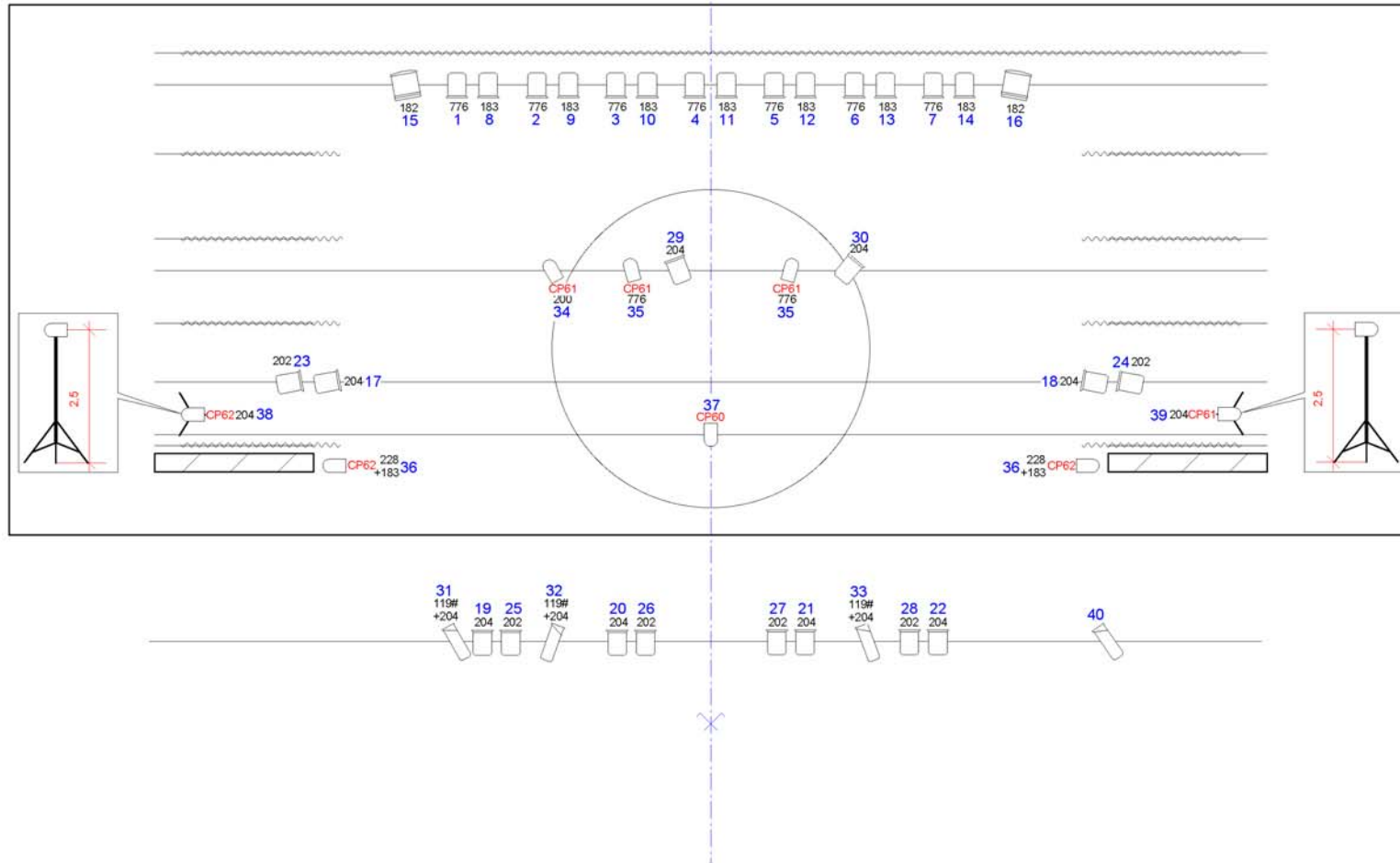
Tel.: + 34 657 542 765

AERIALS: Adrián

greenbed@hotmail.com

Tel.: + 34 649 738 493



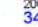
CIRCUS KLEZMER



-  Recorte 1 kw X 4
-  PC 1 kw X 28
-  Fresnel 2 kw X 2
-  PAR 64 X 8

Ch 36 en suelo con platina

Ch 41 - 42 material que trae la compañía

-  Lámpara
-  Filtro
-  Canal de dimmer